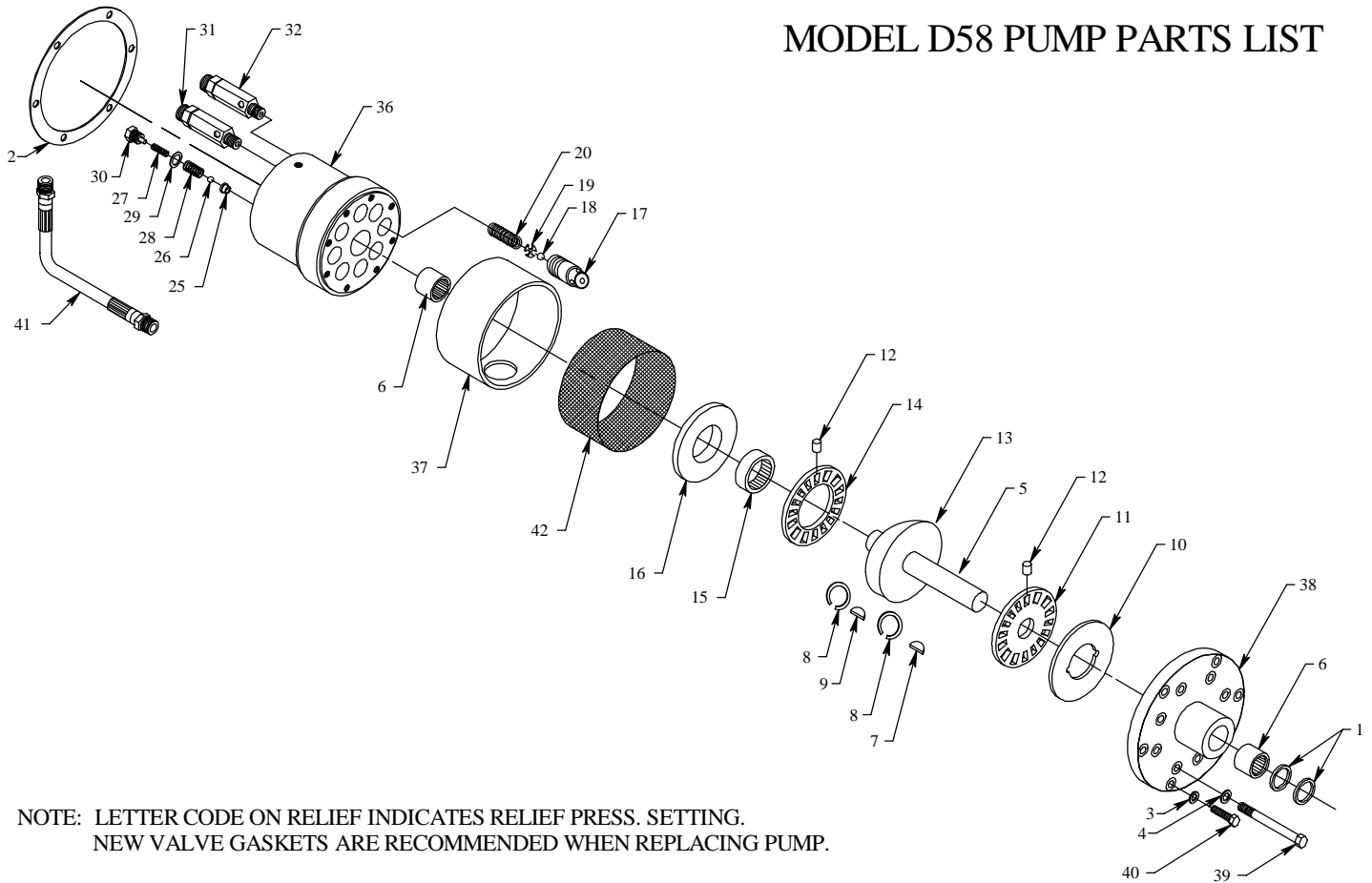


MODEL D58 PUMP PARTS LIST



NOTE: LETTER CODE ON RELIEF INDICATES RELIEF PRESS. SETTING.
NEW VALVE GASKETS ARE RECOMMENDED WHEN REPLACING PUMP.

NO.	PART NO.	QTY.	PART DESCRIPTION	NO.	PART NO.	QTY.	PART DESCRIPTION
1359 SEAL KIT				1356 PISTON KIT			
1	1028	2	OIL SEAL	17	1235	8	PISTON
2	1012	1	PUMP GASKET	18	1168	8	BALL
3	1030	6	ALUMINUM WASHER	19	1233	8	BALL STOP
4	1108	8	ALUMINUM WASHER	20	1234	8	SPRING
1358 SHAFT AND BEARING KIT				1354 EXHAUST VALVE KIT			
5	1075	1	SHAFT	25	1043	8	SEAT
6	1023	2	NEEDLE BEARING	26	1015	8	BALL
7	1027	1	SHAFT KEY	27	2264	8	EXHAUST SPRING
8	1118	2	SNAP RING	28	1041	8	CAGE SPRING
9	1117	1	WOBBLE KEY	29	1009	8	WASHER
1357 THRUST BEARING KIT				30	1008	8	PORT STUD
10	1080	1	THRUST RACE	REMAINING PUMP PARTS			
11	1077	1	FRONT ROLLER RETAINER	31,32	1087	2	DUAL RELIEF VALVE (SPECIFY PUMP MODEL, SERIAL#, PRESS. & R.P.M.)
12	1119	32	THRUST ROLLER BEARING	36	1231	1	PUMP CASTING (Not Sold Separately)
13	1232	1	WOBBLE PLATE	37	1237	1	INTAKE HOUSING TUBE
14	1078	1	REAR ROLLER RETAINER	38	1350	1	FRONT CASTING
15	1106	1	THRUST PLATE BEARING	39	1107	8	PUMP ASSEMBLY BOLT
16	1076	1	PISTON THRUST PLATE	40	1035	6	MOUNTING CAP SCREW
				41	--		HOSE - SPECIFY RESERVOIR SIZE WHEN ORDERING
				42	1515	1	INTAKE SCREEN