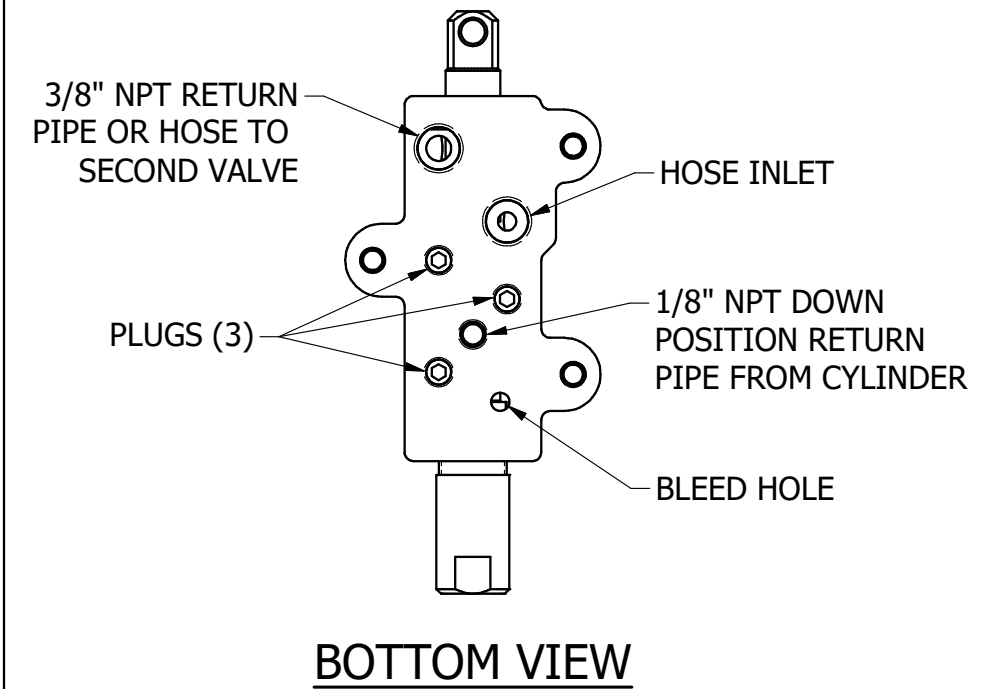
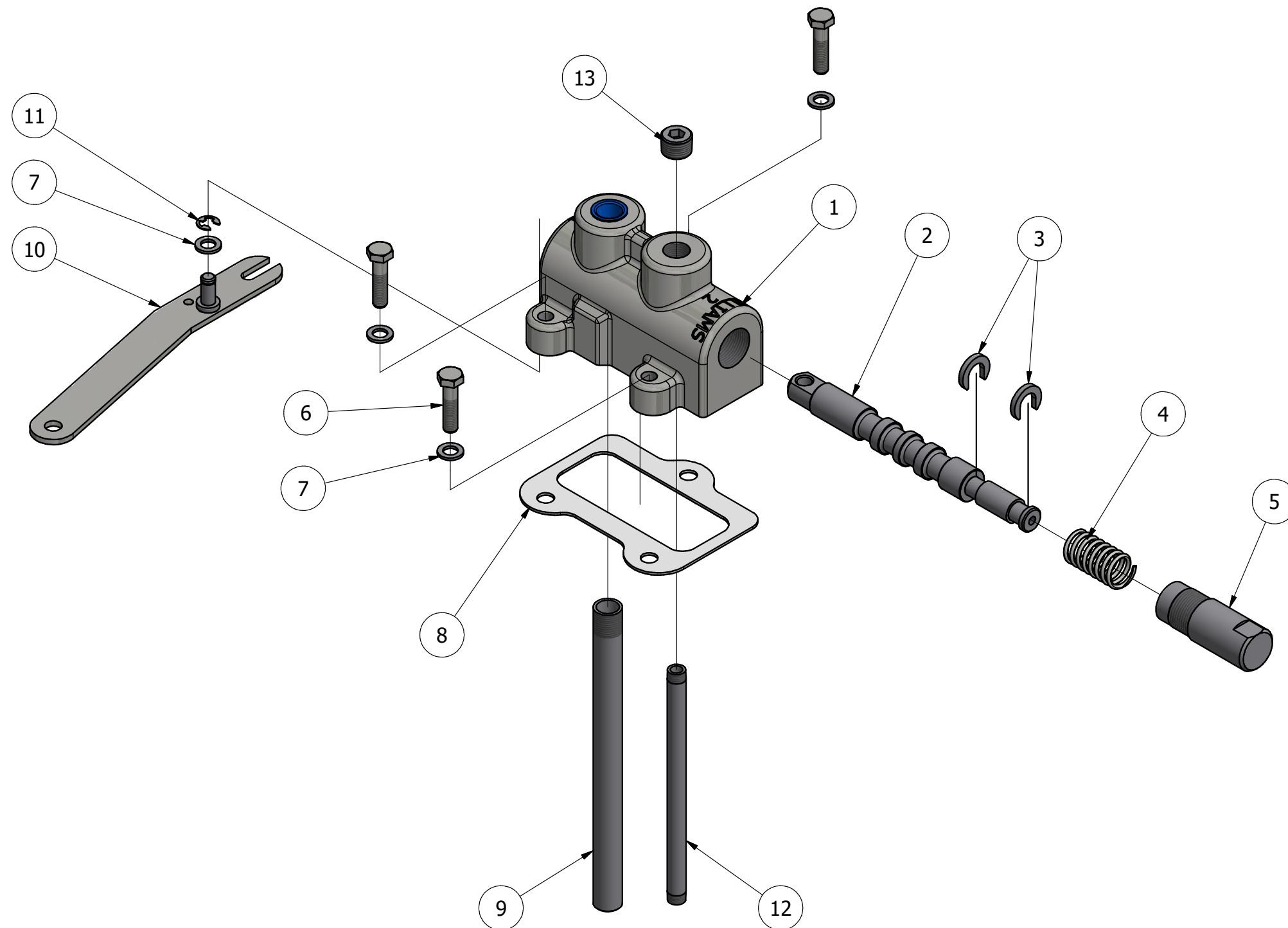


# No. 3 CONTROL VALVE

(3-WAY SINGLE ACTING)



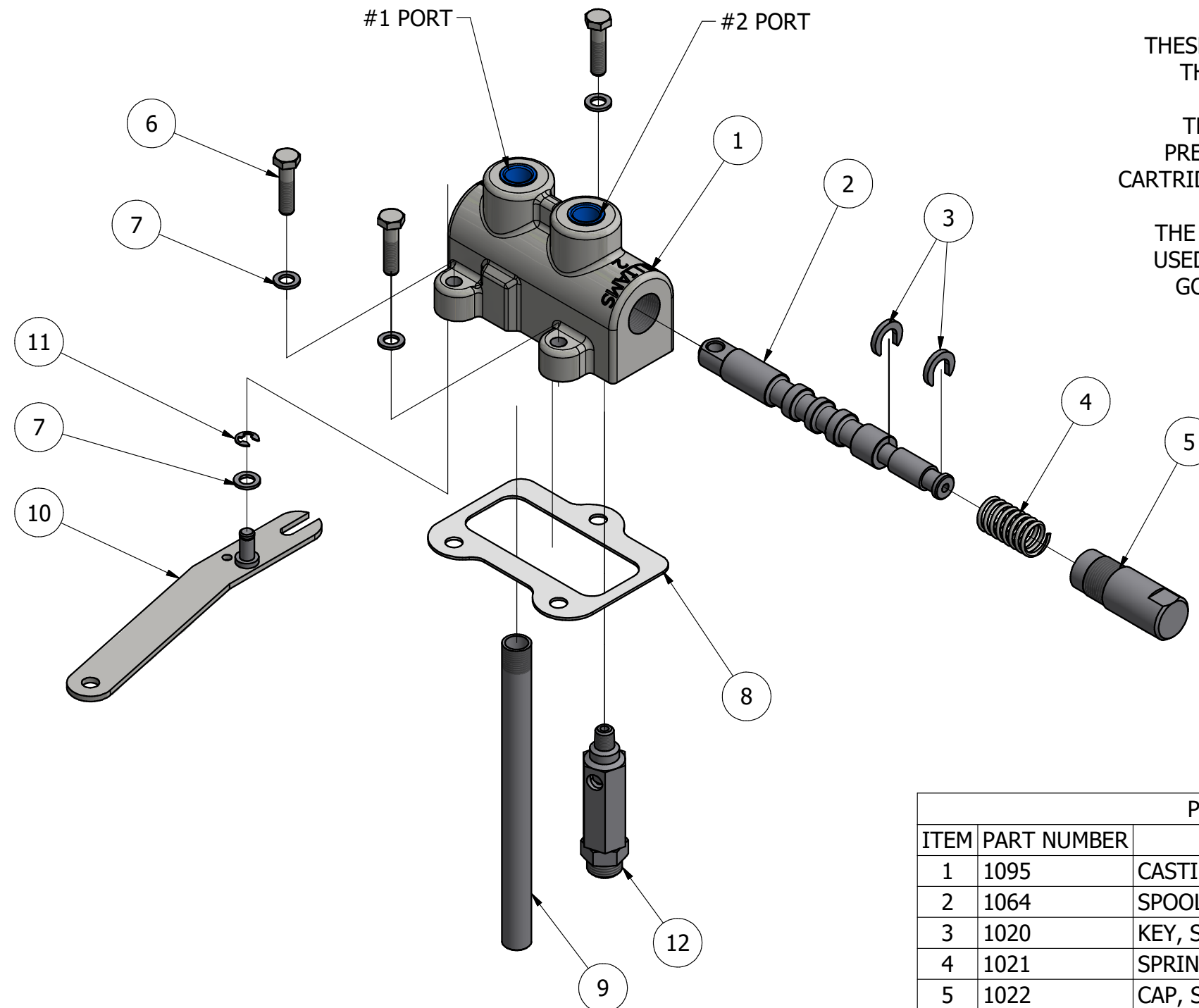
PARTS LIST			
ITEM	PART NUMBER	DESCRIPTION	QTY
1	1095	CASTING VALVE (NOT SOLD SEPARATELY)	1
2	1064	SPOOL, VALVE (NOT SOLD SEPARATELY)	1
3	1020	KEY, SPOOL STOP	2
4	1021	SPRING, SPOOL CENTERING	1
5	1022	CAP, SPOOL	1
6	1035	CAP, SCREWS	3
7	1030	WASHER	3
8	1096	GASKET	1
9	1105	PIPE, OIL RETURN (3/8" NPT)	1
10	1094	LEVER 3 & 4 VALVE	1
11	1102	E-RING	1
12	1228	PIPE, OIL RETURN (1/8" NPT)	1
13	00080647	PLUG, 3/8 NPT ZINC/VIBRA-SEAL	1

# NO. 4 CONTROL VALVE

(4-WAY DOUBLE ACTING)

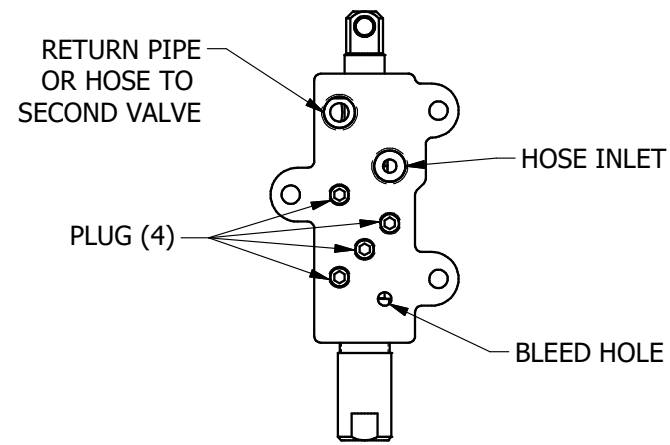
THESE CONTROL VALVES ARE IDENTIFIED IN THE PUMP UNIT MODEL NUMBERS AS **(-4-)** **(-4C-)** **(-4R-)**  
 THE PUMP UNITS HIGHEST WORKING PRESSURE IS REGULATED BY THE RELIEF CARTRIDGES SETTING THAT IS LOCATED ON THE PUMP.

THE "C" AND "R" RELIEF CARTRIDGES ARE USED AT A LOWER PRESSURE SETTING TO GOVERN ONLY PARTS OF THE SYSTEM.



PARTS LIST			
ITEM	PART NUMBER	DESCRIPTION	QTY
1	1095	CASTING (NOT SOLD SEPARATELY)	1
2	1064	SPOOL (NOT SOLD SEPARATELY)	1
3	1020	KEY, SPOOL STOP	2
4	1021	SPRING, SPOOL CENTERING	1
5	1022	CAP, SPOOL	1
6	1035	CAP, SCREWS	3
7	1030	WASHER	3
8	1096	GASKET	1
9	1105	PIPE, OIL RETURN	1
10	1094	LEVER CONTROL	1
11	1102	E-RING	1
12	1101	RELIEF CARTRIDGE ("C" OR "R")	1

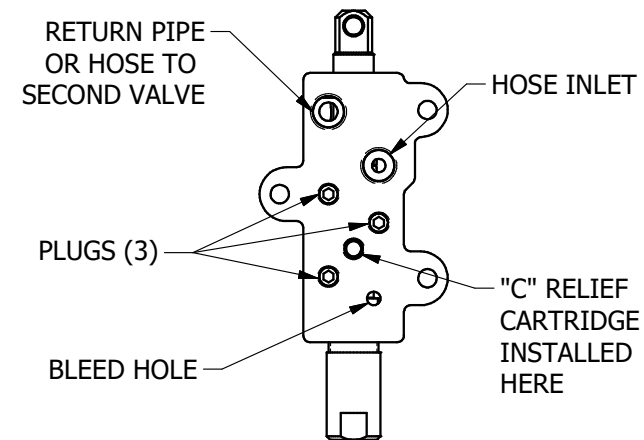
## No. 4



### BOTTOM VIEW

SAME PRESSURE AT BOTH PORTS  
(PUMP PRESSURE SETTING)

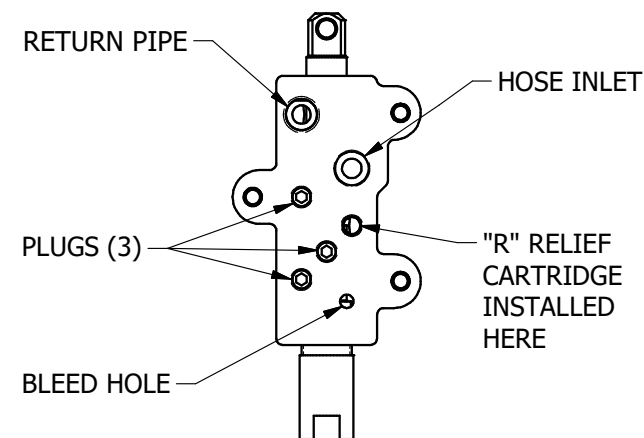
## No. 4C



### BOTTOM VIEW

"C" RELIEF CARTRIDGE CAN BE INSTALLED FOR LOWER PRESSURE AT NO. "2" PORT ONLY

## No. 4R



### BOTTOM VIEW

WHEN USED AS SECOND VALVE "R" RELIEF CARTRIDGE CAN BE INSTALLED FOR LOWER PRESSURE AT BOTH PORTS